

- H-16 #20999000
- H-18 #60999000
- H-20 #40999000
- H-21SE #30999000

PACKAGE CONTENTS:

- * 2 piece pole
- * Pole assembly rivets and halyard hardware
- * Lines, halyard/tack etc.
- * Spinnaker sheeting line and hardware

TOOLS REQUIRED:

- * Drill motor
- * 3/16 bit
- * 15/64 bit
- * 9/64 bit
- * Rivet gun

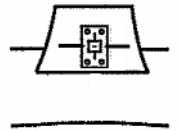
INSTRUCTIONS:

PARTS ASSEMBLY:

- 1) Rivet pole halves together, both bullet blocks (on ends) UP, using 6-4 rivets provided.

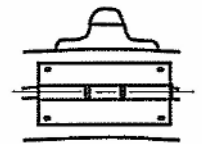
H-16:

- 2) Position x-bar/pole attachment fitting (lower gudgeon) on front of mast step. Place with pin hole horizontal and aligned with lower edge of step. Drill one side with 3/16 bit and rivet in place with two 6-10 rivets. Tap down opposite side with hammer, flush, then drill and rivet.



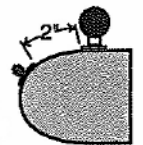
H-18:

- 2) Position x-bar/pole attachment fitting (H-18 gooseneck) at center of front x-bar. Drill with 3/16 bit and rivet with four 6-6 rivets.



H-20 / H-21SE:

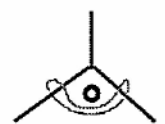
- 2) Position x-bar/pole attachment fitting (lower gudgeon) on front of mast step. Place at center of x-bar with pin hole vertical and 2" below mast step nut. Drill top side with 3/16 bit and rivet in place with two 6-6 rivets. Tap down opposite side with hammer, flush, then drill and rivet.



- 3) Support pole at bridles with 3' shock cord as shown.

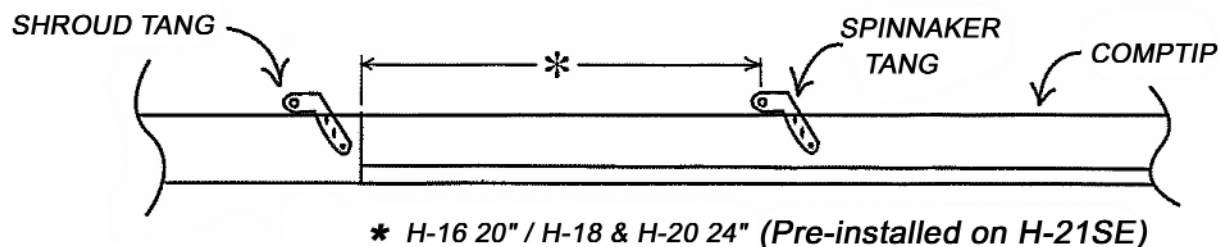
- 4) Pin pole end to x-bar fitting.

- 5) Attach pole bridles with shackles. Tension shock cord to support pole.



HALYARD:

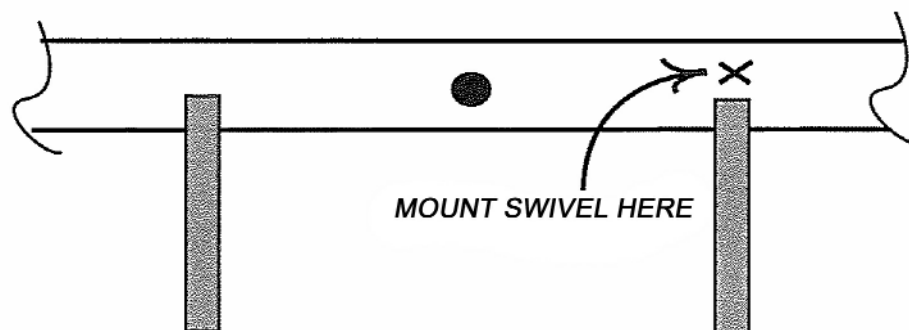
- 1) Position and rivet halyard tangs as shown.



- 2) H-16 kit may include hoop rather than spinnaker tang. In that case mount hoop at the 20" dimension and the cheek block on center and 16" above hoop.
- 3) Rivet with 6-6 rivets w/caps and silicone.
- 4) Hang swivel block from spinnaker tang.
- 5) Run halyard line through block. Lead both ends to mast base and tie off. (H16 kit with hoop... Run halyard from base of mast to cheek block then down thru swivel block hung on hoop then back down to mast base and tie off.
- 6) Step mast.

HALYARD CLEAT:

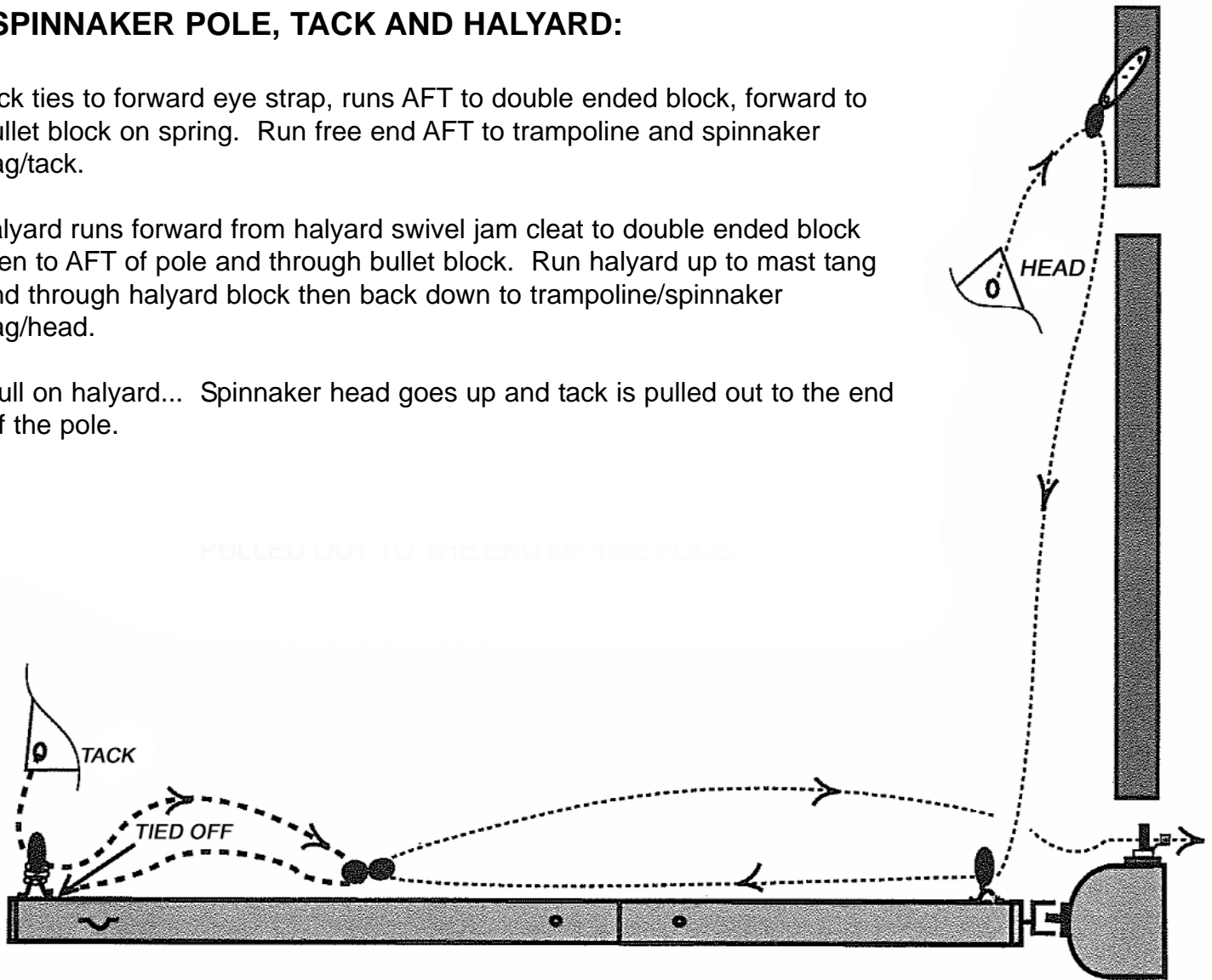
- 1) Position swivel cleat and mounting plate on starboard side of front crossbar inline with hiking strap.



- 2) Fasten swivel cleat with fasteners supplied.

SPINNAKER POLE, TACK AND HALYARD:

- * Tack ties to forward eye strap, runs AFT to double ended block, forward to bullet block on spring. Run free end AFT to trampoline and spinnaker bag/tack.
- * Halyard runs forward from halyard swivel jam cleat to double ended block then to AFT of pole and through bullet block. Run halyard up to mast tang and through halyard block then back down to trampoline/spinnaker bag/head.
- ** Pull on halyard... Spinnaker head goes up and tack is pulled out to the end of the pole.



PULLED OUT TO THE END OF THE POLE

HEAD

TACK

TIED OFF

----- HALYARD

- - - - - TACK LINE

POLE OVERALL CHECK LENGTHS (APPROXIMATE)	
H-16	9' 2"
H-18	8' 8"
H-21SE, H-20	11' 6"

NOTE: Be sure double ended block can run freely, fore and aft along pole. Run to starboard of bungee.

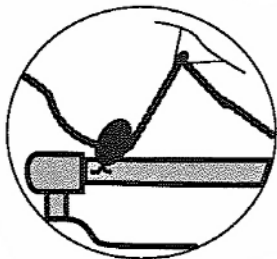
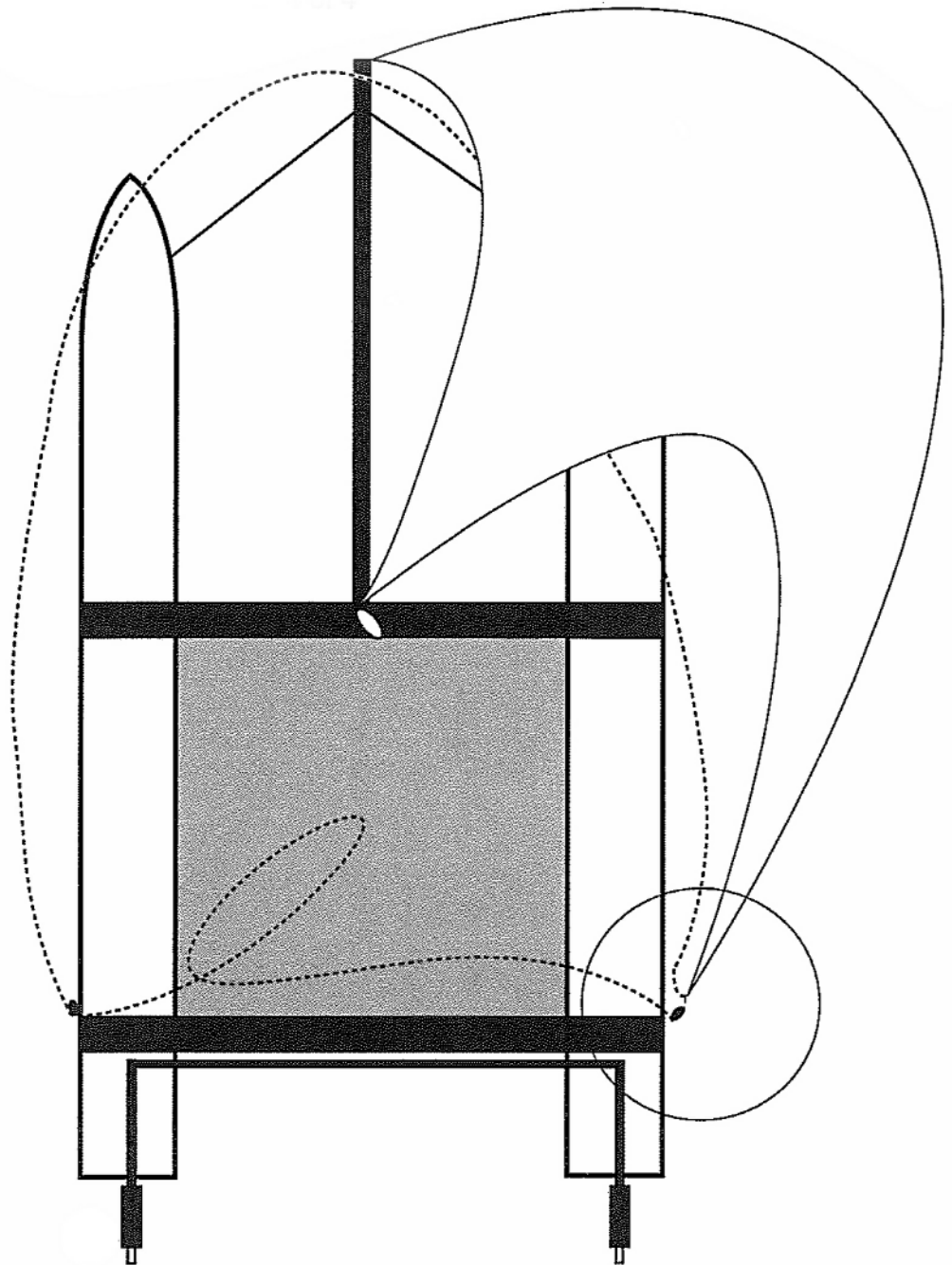
SPINNAKER SHEETS:

Spinnaker sheets run in continuous circle around boat. Start at spinnaker clew and tie with bowline knot. Run sheet through spinnaker block at rear corner of boat. Run sheet across trampoline and through opposite spinnaker block. Lead sheet forward and outside of shroud and in front of forestay. Lead over top of spinnaker pole than aft outboard of shroud. Tie off to clew with bowline.

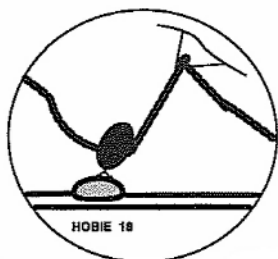
Tack line should lead back to trampoline over top of sheet before launching.

LAUNCHING:

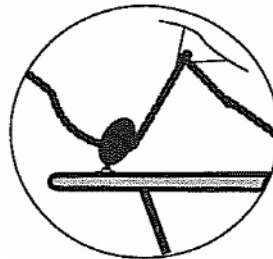
Spinnaker launches and retrieves between mast and either shroud with all lines feeding forward towards bow. Launch spinnaker on downwind side of boat.



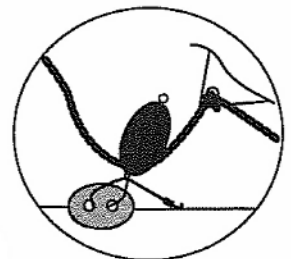
H-16 Rivet eye strap to rear end of side bar. Shackle block to eye strap. Twist on spring as though putting key on key ring. Spring holds block in upright position.



H-18 Rivet eye strap to outboard end of rear crossbar. Shackle block to eye strap. Twist on spring as though putting key on key ring. Spring holds block in upright position.



H-18sx H-21SE Rivet eye strap to outboard end of rear crossbar and rear of wing tube. Shackle block to eye strap. Twist on spring as though putting key on key ring. Spring holds block in upright position.



H-20 Tie line through rear crossbar end cap and round bolt, fasten to block. Hook bungee to trampoline lace line to hold block from water.